



Gosnells Parish Columbarium

Eternal rest grant unto them, O Lord
Let perpetual light shine upon them
May they rest in peace
Amen



Catholic Parish of Gosnells
Our Lady of the Most Blessed Sacrament



The time of death is a difficult time of grief and transition. One of the missions of the Parish of Gosnells is to provide families with pastoral care at this time, directed towards healing and hope.

What is a Columbarium?

A Columbarium is a permanent structure composed of a collection of niches designed to house cremated human remains.

Here in the Parish of Gosnells we have a Columbarium behind the Church of Our Lady of the Most Blessed Sacrament built for our parishioners and their families. The Columbarium affords church members and their families the opportunity to select a final resting place within the environs of the parish church which has been central to their lives.

The Columbarium area is maintained by the Gosnells Parish Columbarium committee in a clean and dignified condition. The Committee reserves the right to remove all unauthorised objects that detract from the beauty of the Columbarium.



What about Cremation?

In May, 1963, the Vatican's Holy Office lifted the prohibition forbidding Catholics to choose cremation. This permission was incorporated into the revised Code of Canon Law of 1963 as well as into the Order of Christian Funerals.

Since there is little difference between the remains of one who has been buried and one who has been cremated, there is no reason to favour one over the other, from a theological point of view. According to the Bible, at the resurrection we are given a "new body," which also means that we will still be our own unique, individual selves. The decision to bury or cremate is one that must be made with sensitivity toward the feelings of all members of the family.

Whatever we choose, we can be confident that the gift of eternal life is given to all who believe.

By its recognition of cremation, the Church has opened great possibilities for parish communities to provide perpetual care of its members within its community environs. The Church has extended its liturgies and rites to embrace the family and community needs of the members who have chosen cremation.

The final disposition of bodily remains signifies our respect for the body of the one we have loved. We commit the body to the grave or columbarium but, more importantly, we commit our loved one to God.

In the Christian faith our church is where all events of life are celebrated, lived and honoured: birth, baptism, confirmation, marriage, worship of God, spiritual growth and finally death.

Being able to select one's final resting place where they have received the church's spiritual blessings and comfort allows one to reach beyond their death in a definitive way.

Interment of Ashes

Following the funeral, the body is cremated at the Crematorium. The family will be contacted later by the Crematorium or funeral director for the ashes of their loved one to be collected. The family will then contact our Parish Office to arrange for the interment of the ashes in the Columbarium. The ashes will be transferred by a family member into an approved container, for placement in a previously selected niche in the wall of the Columbarium.

A plaque will need to be ordered through the Parish Office and pending its arrival, the family will arrange a suitable date with the Parish Priest for the interment.



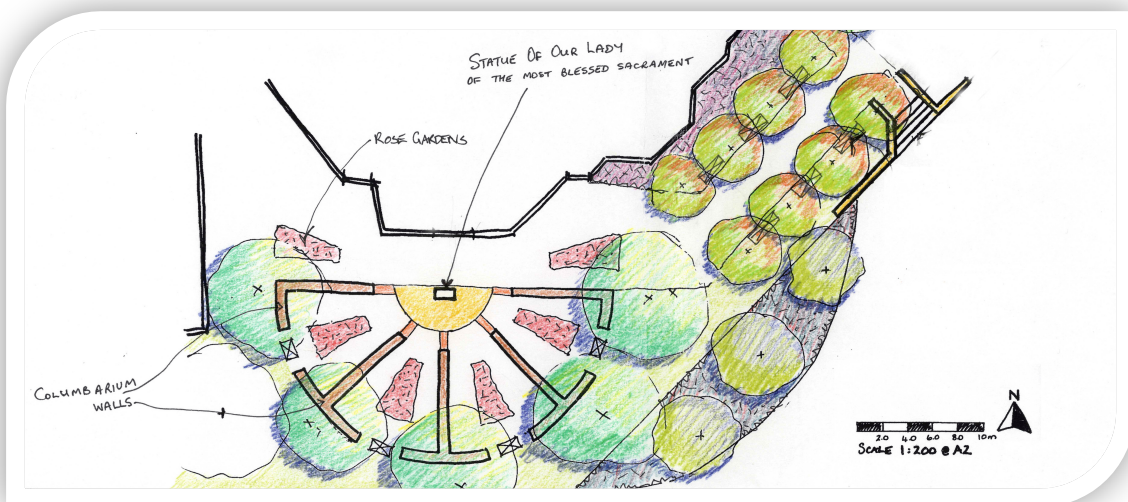
Memorial Wall

The Parish has a designated Memorial Wall in the Columbarium area, for installation of Memorial Plaques in remembrance of loved ones who are buried or interred elsewhere.

Plaques

Columbarium and Memorial Bronze Plaques are of standard design and size. Installation is included in the cost of the plaque. The words and symbols (motifs) are to be discussed at the time of ordering, but shall be in accordance with the guidelines of the Gosnells Parish Columbarium.

You will be contacted by the parish when the plaque is received.



Reservation Process

- Contact the Parish Office for Application Forms
- Complete the Application
- Pay the appropriate fees

Enquiries

For more information on the availability and reservation of niches and plaques, contact the Parish Office or complete the Expression of Interest form and forward it to the Parish Office.

Contact Details

Gosnells Parish Office
Entry by St Munchin's Primary School
1 Isdell Place, Gosnells

Postal Address: PO Box 297 Gosnells WA 6990

Phone: 9398 2331 Fax: 9398 8491

Email: columbarium@gosnellsparish.org.au

Website: www.gosnellsparish.org.au

Gosnells Parish Columbarium

EXPRESSION OF INTEREST

By completing and signing this form you are not committing to the purchase of a niche.

Last Name: _____

First Name: _____

Address: _____

Phone: _____

Email: _____

I am/We are interested in a:

Single Niche []

Double Niche []

I/We, therefore, authorise the Parish of Gosnells to contact me/us to discuss the matter further.

Signed: _____ Dated: _____

Return to:

Catholic Parish of Gosnells

PO Box 297, Gosnells WA 6990

Phone: (08) 9398 2331 Fax: (08) 9398 8491

Email: columbarium@gosnellsparish.org.au





Catholic Parish of Gosnells
Our Lady of the Most Blessed Sacrament